

Gippsland Vegetation Types: Ecological Vegetation Classes (EVC'S)

EVC description derived from Davies et.al (2001) Ecological Vegetation Class Mapping at 1:25 000 in Gippsland.

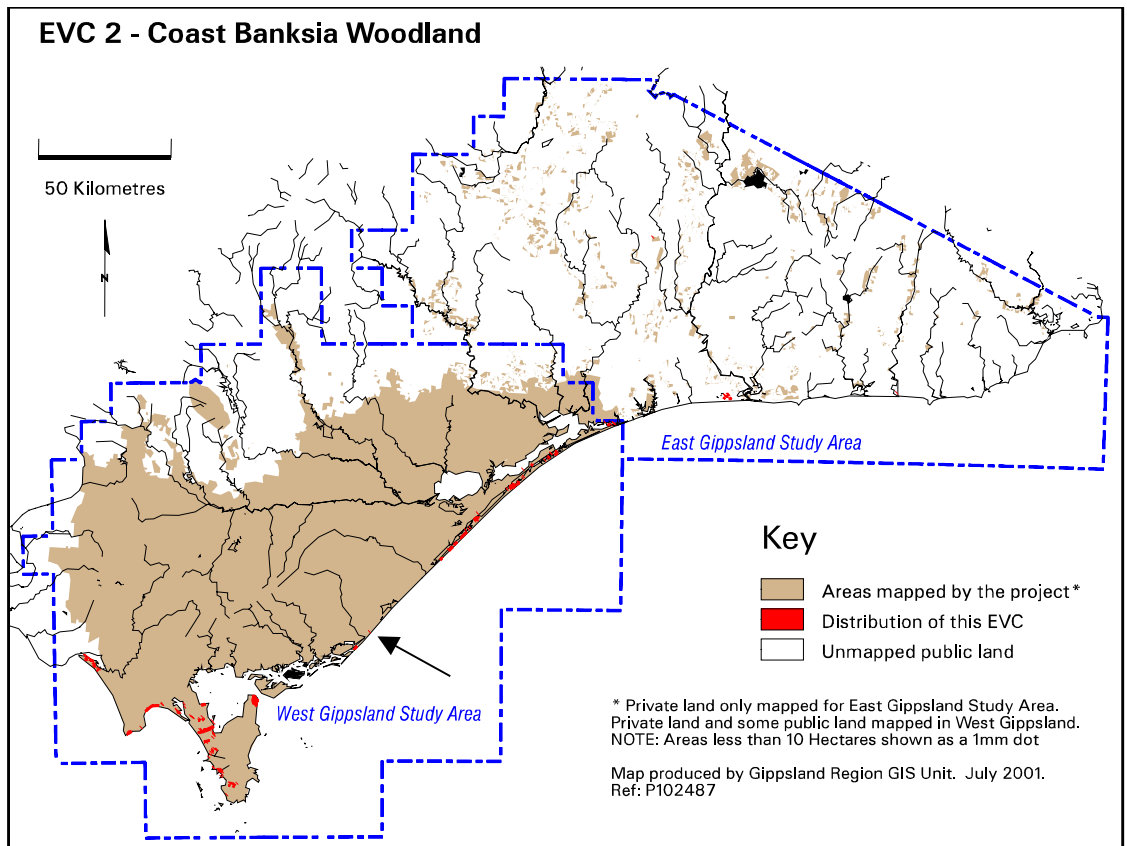
EVC 2 Coast Banksia Woodland

Restricted to coastal or near coastal localities inland behind secondary or tertiary dunes or on sand sheets inland from Coastal Dune Scrub Mosaic. Usually dominated by an overstorey of Coast Banksia *Banksia integrifolia* var. *integrifolia* over tall shrubs of Coast Tea-tree *Leptospermum laevigatum*. Scramblers such as Bower Spinach *Tetragonia implexicoma* are common in the understorey with a groundcover of grasses, herbs and sedges.



Coast Banksia Woodland on Rigby Island, Gippsland Lakes. Photo: John Davies 1996.

| | |
|---|---|
| Elevation (metres above sea level) | <30 |
| Rainfall average p.a. (mm) | <1000 |
| Topography | Secondary or tertiary dunes or sand sheets further inland |
| Geology | Quaternary sand deposits |
| Soils | Deep calcareous sand/loamy sand with a higher organic content and greater soil horizon development than Coastal Dune Scrub Mosaic |
| Related/adjacent EVCs/FCs | Coastal Dune Scrub Mosaic (seaward), Damp Sands Herb-rich Woodland (inland), Limestone Box Forest |
| Present land use | Nature conservation, recreation, residential development, agriculture |
| Present distribution | Behind Ninety Mile Beach, Yanakie Isthmus, Wilsons Promontory National Park, Waratah Bay, Anderson Inlet |
| Examples of sites/quadrats/lists | Rigby Island, The Lakes National Park (U23172), Gippsland Lakes Coastal Park:(U23154), Wilsons Promontory National Park: east of Mount Singapore (F22614) and south of Little Oberon (U23647) |
| Total Area(ha)/ Number of polygons | 1,479/148 |



Vegetation: structure/floristics:

The dominant tree/tall shrub is Coast Banksia *Banksia integrifolia* var. *integrifolia*, a good indicator species for this EVC. A tall shrub layer is present which may include Sallow Wattle *Acacia longifolia* var. *sophorae*, Common Boobiella *Myoporum insulare* and Coast Tea-tree *Leptospermum laevigatum* of varying density as well as Swamp Paperbark *Melaleuca ericifolia* which is typically found in adjoining poorly drained sites that support Estuarine Wetland, Swamp Scrub or Riparian Scrub.

When Coast Tea-tree *Leptospermum laevigatum* is not predominating, shrubs such as White Elderberry *Sambucus gaudichaudiana* and the halophytes Seaberry Saltbush *Rhagodia candolleana* subsp. *candolleana* and Bower Spinach *Tetragonia implexicoma* are common. Coast Sword-sedge *Lepidosperma gladiatum* may be a prominent feature of the ground layer together with Kidney-weed *Dichondra repens*. Other plants which may be present include Sea Celery *Apium prostratum* subsp. *prostratum*, Ragwort *Senecio jacobaea*, Jagged Fireweed *S. biserratus*, Tangled Bedstraw *Galium australe*, Angled Lobelia *Lobelia anceps*, Hairy Pennywort *Hydrocotyle hirta*, Common Bottle-daisy *Lagenophora stipitata*, Ivy-leaf Violet *Viola hederacea* s.l. and Knobby Club-sedge *Isolepis nodosa*.

Comments:

In protected areas of coastline such as at the western end of Waratah Bay where Cape Liptrap provides protection from the prevailing south-westerly weather, the EVC develops further out onto the sand dunes rather than being restricted to the topographically protected sites behind the dunes.

Coast Banksia Woodland may contain the rare shrub Limestone Pomaderris *Pomaderris oraria* subsp. *calcicola*. In coastal areas of East Gippsland where a warm temperate climate prevails, a number of species appear which link this EVC to Warm Temperate Rainforest. This includes Scrambling Lily *Geitonoplesium cymosum*, Austral Sarsaparilla *Smilax australis*, Milk-vine *Marsdenia rostrata* and Wombat Berry *Eustrephus latifolius*.

Gippsland species list including species frequency and fidelity.

Fidelity: Rating of faithfulness of a species to an EVC or Floristic Community
Highest fidelity rating indicated by an “F” ie species only recorded in respective group

% Frequency: Percentage occurrence of a species/taxa in an EVC or Floristic Community –
NB. Species highlighted in red are the most frequent and important.
 * = weed ie: non-native.
 Rarity categories from NRE’s Flora Information System (FIS).

EVC 2: COAST BANKSIA WOODLAND

| Lifeform | Scientific Name | Common Name | % Fr | F |
|----------|---|-----------------------|------|-----|
| Trees | <i>Eucalyptus viminalis</i> ssp. <i>Pryoriana</i> | Coast Manna Gum | 16 | 1 |
| | <i>Eucalyptus baueriana</i> | Blue Box | 10 | 114 |
| | <i>Eucalyptus bosistoana</i> | Coast Grey Box | 10 | 38 |
| Shrubs | <i>Leucopogon parviflorus</i> | Coast Beard-heath | 58 | 5 |
| | <i>Myoporum insulare</i> | Common Boobiella | 55 | 28 |
| | <i>Melaleuca ericifolia</i> | Swamp Paperbark | 55 | 5 |
| | <i>Banksia integrifolia</i> | Coast Banksia | 52 | 32 |
| | <i>Acacia melanoxylon</i> | Blackwood | 26 | 2 |
| | <i>Acacia longifolia</i> var. <i>longifolia</i> | Sallow Wattle | 23 | 9 |
| | <i>Acacia mearnsii</i> | Black Wattle | 23 | 6 |
| | Rr <i>Pomaderris oraria</i> ssp. <i>calcicola</i> | Limestone Pomaderris | 19 | F |
| | <i>Hymenanchera dentata</i> | Tree Violet | 19 | 10 |
| | <i>Pittosporum undulatum</i> | Sweet Pittosporum | 19 | 3 |
| | <i>Leptospermum laevigatum</i> | Coast Tea-tree | 19 | 2 |
| | <i>Muehlenbeckia adpressa</i> | Climbing Lignum | 16 | 12 |
| | <i>Exocarpos cupressiformis</i> | Cherry Ballart | 16 | 10 |
| | <i>Rubus parvifolius</i> | Small-leaf Bramble | 16 | 5 |
| | <i>Kunzea ericoides</i> | Burgan | 16 | 2 |
| | <i>Correa reflexa</i> | Common Correa | 16 | 2 |
| | <i>Bursaria spinosa</i> | Sweet Bursaria | 16 | 1 |
| | Rr <i>Pomaderris oraria</i> | Coast Pomaderris | 13 | 14 |
| | <i>Pimelea axiflora</i> | Bootlace Bush | 13 | 5 |
| | <i>Monotoca elliptica</i> | Tree Broom-heath | 13 | 5 |
| | <i>Olearia lirata</i> | Snow Daisy-bush | 13 | 1 |
| | <i>Cassinia aculeata</i> | Common Cassinia | 13 | 0.8 |
| | <i>Dodonaea viscosa</i> | Sticky Hop-bush | 10 | 57 |
| | <i>Acmena smithii</i> | Lilly Pilly | 10 | 3 |
| | <i>Allocasuarina verticillata</i> | Drooping Sheoke | 10 | 1 |
| | <i>Banksia serrata</i> | Saw Banksia | 10 | 0.7 |
| | <i>Bursaria spinosa</i> | Sweet Bursaria | 6 | F |
| Herbs | <i>Dichondra repens</i> | Kidney-weed | 81 | 3 |
| | <i>Wahlenbergia gracilis</i> | Sprawling Bluebell | 45 | 7 |
| | <i>Galium gaudichaudii</i> | Rough Bedstraw | 39 | 13 |
| | <i>Geranium potentilloides</i> | Cinquefoil Cranesbill | 39 | 2 |
| | <i>Acaena novae-zelandiae</i> | Bidgee-widgee | 39 | 2 |
| | <i>Hydrocotyle hirta</i> | Hairy Pennywort | 35 | 3 |
| | <i>Apium prostratum</i> | Sea Celery | 32 | 18 |
| | <i>Ranunculus sessiliflorus</i> | Annual Buttercup | 32 | 12 |
| | <i>Oxalis corniculata</i> s.l. | Yellow Wood-sorrel | 32 | 2 |
| | <i>Crassula sieberiana</i> | Australian Stonecrop | 29 | 5 |
| | <i>Cotula australis</i> | Common Cotula | 29 | 4 |
| | <i>Leptinella reptans</i> | Creeping Cotula | 26 | 13 |
| | <i>Senecio spathulatus</i> | Coast Groundsel | 23 | 15 |
| | <i>Rumex brownii</i> | Slender Dock | 23 | 8 |

| Lifeform | Scientific Name | Common Name | % Fr | F |
|--------------------|---|-------------------------|------|-----|
| | <i>Senecio quadridentatus</i> | Cotton Fireweed | 23 | 5 |
| | <i>Lagenophora stipitata</i> | Common Bottle-daisy | 23 | 0.8 |
| | <i>Actites megalocarpa</i> | Coast Sow-thistle | 19 | 76 |
| | <i>Stellaria pungens</i> | Prickly Starwort | 19 | 8 |
| | <i>Luzula campestris</i> spp.agg. | Field Woodrush | 19 | 4 |
| | <i>Cardamine gunnii</i> | Common Bitter-cress | 16 | 19 |
| | <i>Epilobium billardierianum</i> | Robust Willow-herb | 16 | 4 |
| | <i>Veronica plebeia</i> | Trailing Speedwell | 16 | 3 |
| | <i>Senecio linearifolius</i> | Fireweed Groundsel | 16 | 2 |
| | <i>Viola hederacea</i> | Ivy-leaf Violet | 16 | 0.8 |
| | <i>Triglochin striatum</i> | Streaked Arrow-grass | 13 | 7 |
| | <i>Lilaeopsis polyantha</i> | Australian Lilaeopsis | 13 | 7 |
| | <i>Stellaria flaccida</i> | Forest Starwort | 13 | 1 |
| | <i>Cardamine hirsuta</i> | Hairy Wood-cress | 10 | 114 |
| Climbers/ Vines | <i>Clematis microphylla</i> | Small-leaved Clematis | 42 | 5 |
| | <i>Clematis glycinoides</i> var. <i>glycinoides</i> | Forest Clematis | 19 | 4 |
| | <i>Marsdenia rostrata</i> | Milk-vine | 13 | 4 |
| | <i>Eustrephus latifolius</i> | Wombat Berry | 13 | 3 |
| | <i>Smilax australis</i> | Austral Sarsaparilla | 10 | 3 |
| | <i>Geitonoplesium cymosum</i> | Scrambling Lily | 10 | 2 |
| Ferns | <i>Pteridium esculentum</i> | Austral Bracken | 55 | 1 |
| | <i>Pellaea falcata</i> | Sickle Fern | 16 | 3 |
| Sedges | <i>Isolepis nodosa</i> | Knobby Club-sedge | 77 | 6 |
| | <i>Baumea juncea</i> | Bare Twig-sedge | 23 | 12 |
| | <i>Lepidosperma concavum</i> | Sand-hill Sword-sedge | 23 | 4 |
| | <i>Isolepis marginata</i> | Little Club-sedge | 19 | 5 |
| | <i>Lepidosperma gladiatum</i> | Coast Sword-sedge | 10 | 3 |
| Rushes | <i>Juncus kraussii</i> | Sea Rush | 26 | 8 |
| | <i>Juncus pallidus</i> | Pale Rush | 19 | 6 |
| Halophytes | <i>Rhagodia candolleana</i> ssp. <i>candolleana</i> | Seaberry Saltbush | 58 | 13 |
| | <i>Tetragonia implexicoma</i> | Bower Spinach | 52 | 23 |
| | <i>Samolus repens</i> | Creeping Brookweed | 32 | 8 |
| | <i>Sarcocornia quinqueflora</i> | Beaded Glasswort | 26 | 8 |
| | <i>Carpobrotus rossii</i> | Karkalla | 23 | 11 |
| | <i>Disphyma crassifolium</i> ssp. <i>clavellatum</i> | Rounded Noon-flower | 23 | 8 |
| | <i>Selliera radicans</i> | Shiny Swamp-mat | 23 | 5 |
| | <i>Suaeda australis</i> | Austral Seablite | 16 | 11 |
| Other | <i>Lomandra longifolia</i> | Spiny-headed Mat-rush | 45 | 1 |
| | <i>Dianella</i> <i>brevicaulis/revoluta</i> | Black-anther Flax-lily | 23 | 2 |
| Grasses | <i>Poa</i> sp. | Tussock Grass | 55 | 1 |
| | <i>Distichlis distichophylla</i> | Australian Salt-grass | 42 | 12 |
| | <i>Microlaena stipoides</i> var. <i>stipoides</i> | Weeping Grass | 26 | 1 |
| | <i>Phragmites australis</i> | Common Reed | 19 | 8 |
| | <i>Imperata cylindrica</i> | Blady Grass | 16 | 5 |
| | <i>Notodanthonia longifolium</i> | Long-leaf Wallaby-grass | 13 | 76 |
| | <i>Spinifex sericeus</i> | Hairy Spinifex | 13 | 51 |
| Weeds | * <i>Hypochoeris radicata</i> | Cat's Ear | 68 | 1 |
| | * <i>Cerastium glomeratum</i> | Common Mouse-ear | 55 | 11 |
| | | Chickweed | | |
| | * <i>Sonchus oleraceus</i> | Sow-thistle | 52 | 4 |
| | * <i>Cirsium vulgare</i> | Spear Thistle | 48 | 3 |
| | * <i>Holcus lanatus</i> | Yorkshire Fog | 29 | 1 |
| | * <i>Asparagus asparagoides</i> | Bridal Creeper | 26 | 12 |
| | * <i>Stellaria media</i> | Chickweed | 26 | 9 |

| Lifeform | Scientific Name | Common Name | % Fr | F |
|-----------------|---|----------------------|-------------|----------|
| * | <i>Polycarpon tetraphyllum</i> | Four-leaved Allseed | 19 | 19 |
| * | <i>Rubus fruticosus</i> spp. agg. | Blackberry | 19 | 3 |
| * | <i>Ammophila arenaria</i> | Marram Grass | 16 | F |
| * | <i>Plantago coronopus</i> | Buck's-horn Plantain | 16 | 4 |
| * | <i>Anagallis arvensis</i> | Pimpernel | 16 | 1 |
| * | <i>Centaureum tenuiflorum</i> | Branched Centaury | 16 | 1 |
| * | <i>Lycium ferocissimum</i> | African Box-thorn | 13 | 153 |
| * | <i>Taraxacum</i> Sect. <i>Ruderalia</i> | Garden Dandelion | 13 | 7 |
| * | <i>Verbascum virgatum</i> | Twiggy Mullein | 10 | 23 |